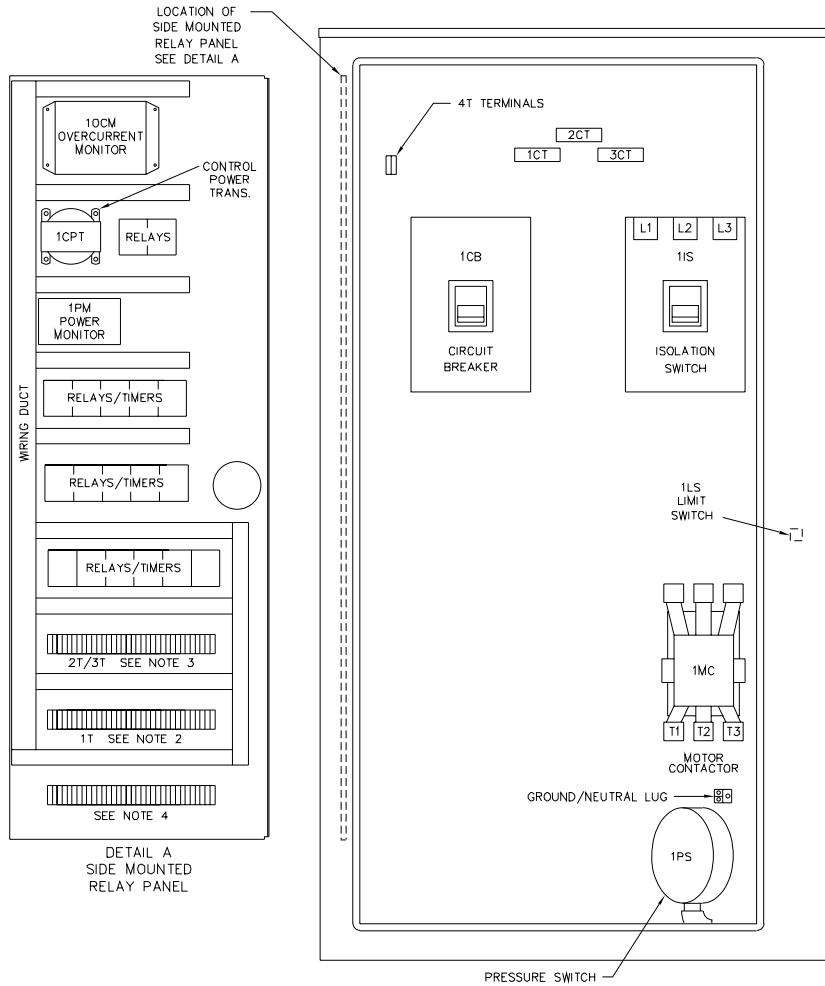


1T\*  
FIELD  
TERMINALS

- |    |    |   |
|----|----|---|
| 1  | 1  | } N.O. CONTACT. OPENS ON<br>LOSS OF CONTROLLER POWER  |
| 2  | 2  |   |
| 3  | 3  | } N.C. CONTACT. CLOSES ON<br>LOSS OF CONTROLLER POWER |
| 4  | 4  |   |
| 5  | 5  | } N.O. CONTACT. CLOSES<br>WHEN PUMP RUNNING           |
| 6  | 6  |   |
| 7  | 7  | } N.C. CONTACT. OPENS<br>WHEN PUMP RUNNING            |
| 8  | 8  |   |
| 9  | 9  | } REMOTE START. PUMP WILL<br>START WHEN SWITCH CLOSES |
| 10 | 10 |   |
| 11 |    |   |
| 12 |    |   |
| 13 |    |   |
| 14 |    |   |
| 15 |    |   |
| 16 |    |   |
| 17 |    |   |
| 18 | 18 | } N.O. CONTACT. CLOSES<br>ON PHASE REVERSAL           |
| 19 | 19 |   |
| 20 | 20 | } N.C. CONTACT. OPENS<br>ON PHASE REVERSAL            |
| 21 | 21 |   |
| 22 | 22 | } N.O. CONTACT. OPENS<br>ON MOTOR OVERLOAD            |
| 23 | 23 |   |



	VOLTS AC				PRIMARY WIRE SIZE		
	200V	208V	220V - 240V	380V - 415V	440V - 480V	LINE TERMINAL WIRE SIZE PER PHASE	SERVICE ENTRANCE GROUND LUG WIRE SIZE
MAXIMUM MOTOR HORSEPOWER	250 HP	250 HP	250 HP 300 HP	350 HP	500 HP 600 HP	(3) #1-500 MCM (2) #4/0-500 MCM	(2) #6-250 MCM (2) #6-250 MCM

NOTES:

- POWER MONITOR SIGNALS ANY OF THE FOLLOWING FAILURES:  
LOW VOLTAGE  
LOSS OF VOLTAGE  
PHASE REVERSAL
- 1T FIELD TERMINALS ARE LOCATED AT BOTTOM OF SIDE MOUNTED RELAY PANEL. SEE DETAIL A
- 2T, 3T & MANUAL STOP JUMPER ARE LOCATED IN THIS AREA.
- EXTRA (OPTIONAL) TERMINALS ARE LOCATED IN THIS AREA.

DRAWN SR 5-22-98 CHECK KH 5-22-98 APPD J.A. 5-22-98	<b>METRON, INC.</b> DENVER, CO.	
		INTERNAL LAYOUT & EXTERNAL HOOKUP MODEL M300 ELECTRIC FIRE PUMP CONTROLLER
		CH33075B SCALE N.T.S. SHEET 1 OF 1